

# MONTHLY MEMBERSHIP PROGRESS REPORT

District 325 M

Results as of: 9/30/2024

GMT:

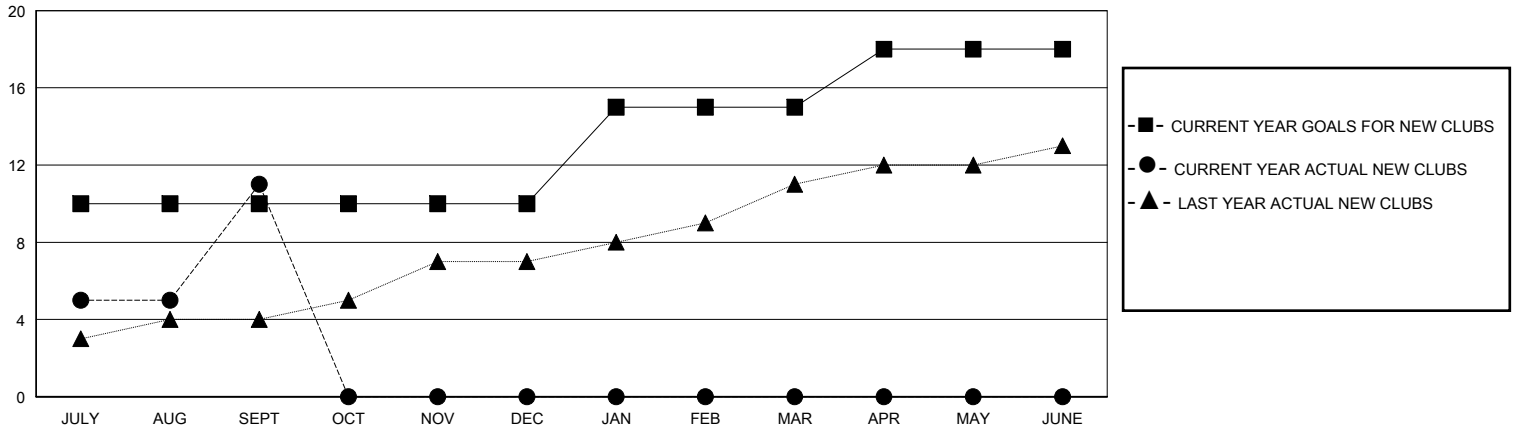
LOCATION NEPAL

GMT CA

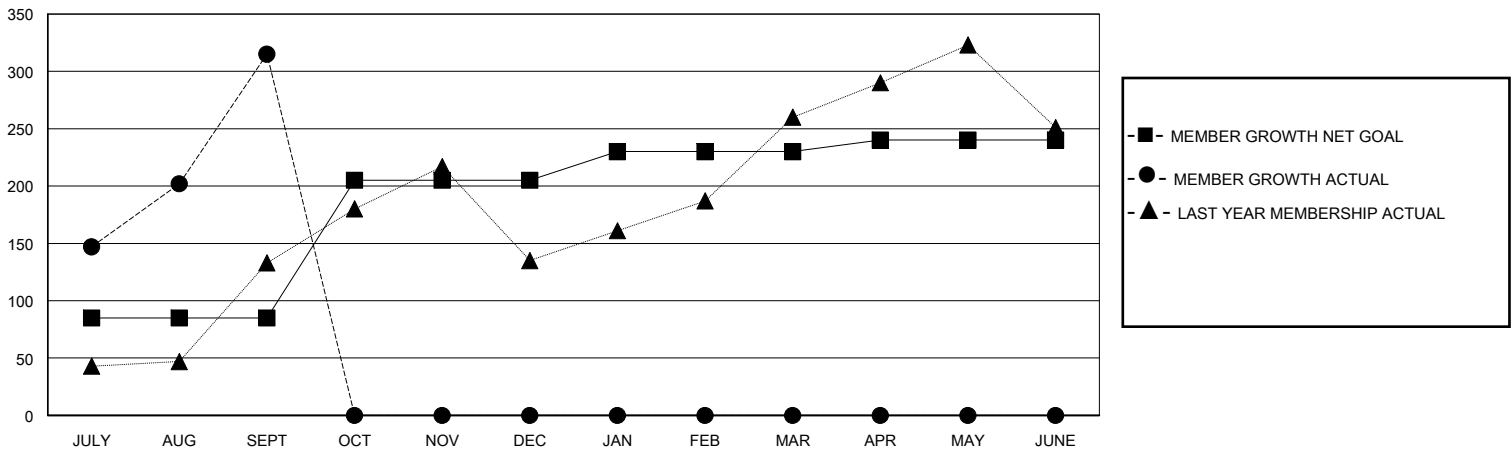
Clubs			
RESULTS FOR 2024-2025			
QUARTER	NEW CLUB GOAL	NEW CLUBS	DROPPED CLUBS
JULY/AUG/SEPT	10	11	1
OCT/NOV/DEC	0	0	0
JAN/FEB/MAR	5	0	0
APR/MAY/JUNE	3	0	0

Members			
RESULTS FOR 2024-2025			
QUARTER	MEMBER GROWTH NET GOAL	MEMBER GROWTH ACTUAL	DROPPED MEMBERS ACTUAL (including transfers)
JULY/AUG/SEPT	85	361	39
OCT/NOV/DEC	120	0	0
JAN/FEB/MAR	25	0	0
APR/MAY/JUNE	10	0	0

GOALS AND ACTUAL NEW CLUBS CUMULATIVE



GOALS AND ACTUAL MEMBERS CUMULATIVE



DROPPED CLUBS: 1	
<b>DROPPED MEMBERS</b>	
DECEASED	0
CLUB CANCELLED	10
OTHER	29
<b>TOTAL</b>	<b>39</b>

64 CLUBS OF 148 ADDED 1 OR MORE NEW MEMBERS

GENDER DISTRIBUTION	
MALE	2,515 (69.09%)
FEMALE	1,124 (30.88%)

[CLICK HERE FOR CUMULATIVE MEMBERSHIP DATA](#)

TOTAL FAMILY UNIT MEMBERS	0
FAMILY MEMBERS PAYING HALF DUES	0